

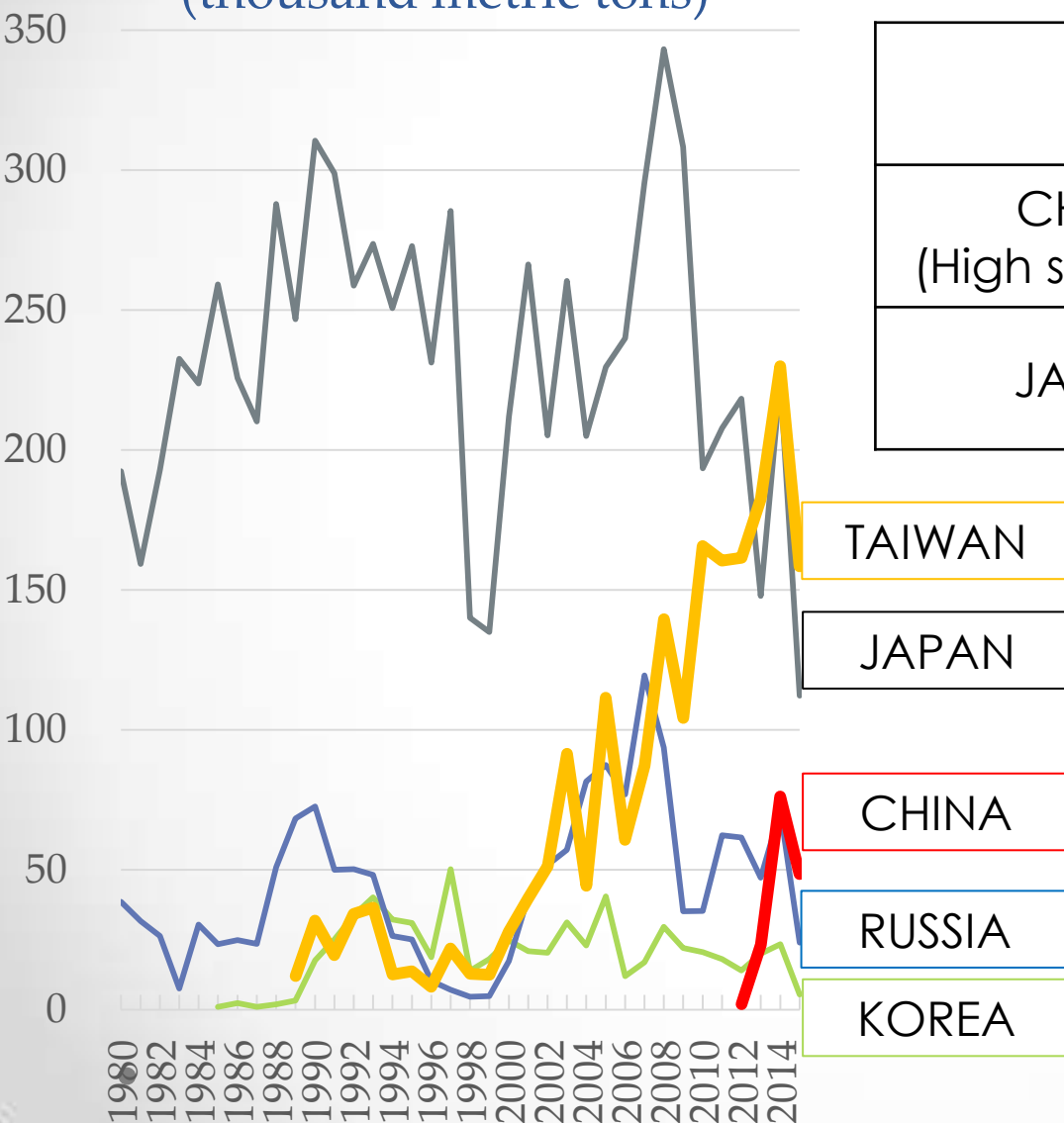
Japan's efforts to fight against IUU fishing by foreign vessels and implementation of PSMA

Hideki MORONUKI

- Fisheries Agency of Japan -

Fishing Activities by Foreign Vessels around JAPAN

Pacific saury catch in North Pacific
(thousand metric tons)



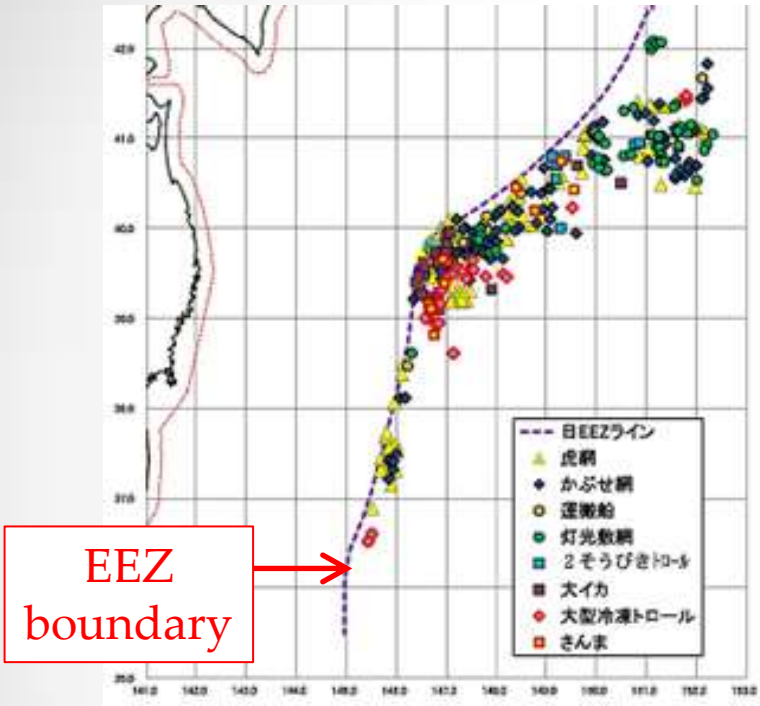
Chub Mackerel catch in North Pacific
(metric tons)

	2014	2015
CHINA (High seas only)	24,629	134,846
JAPAN	380,128	321, 447

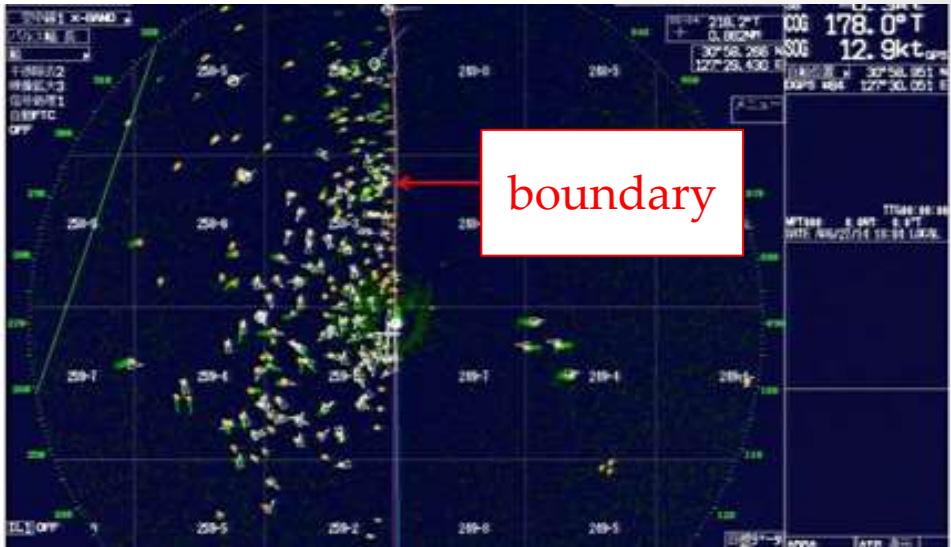


Foreign Vessels and IUU Vessels around JAPAN

Chinese Vessels in NW Pacific



Chinese Vessels in East China Sea



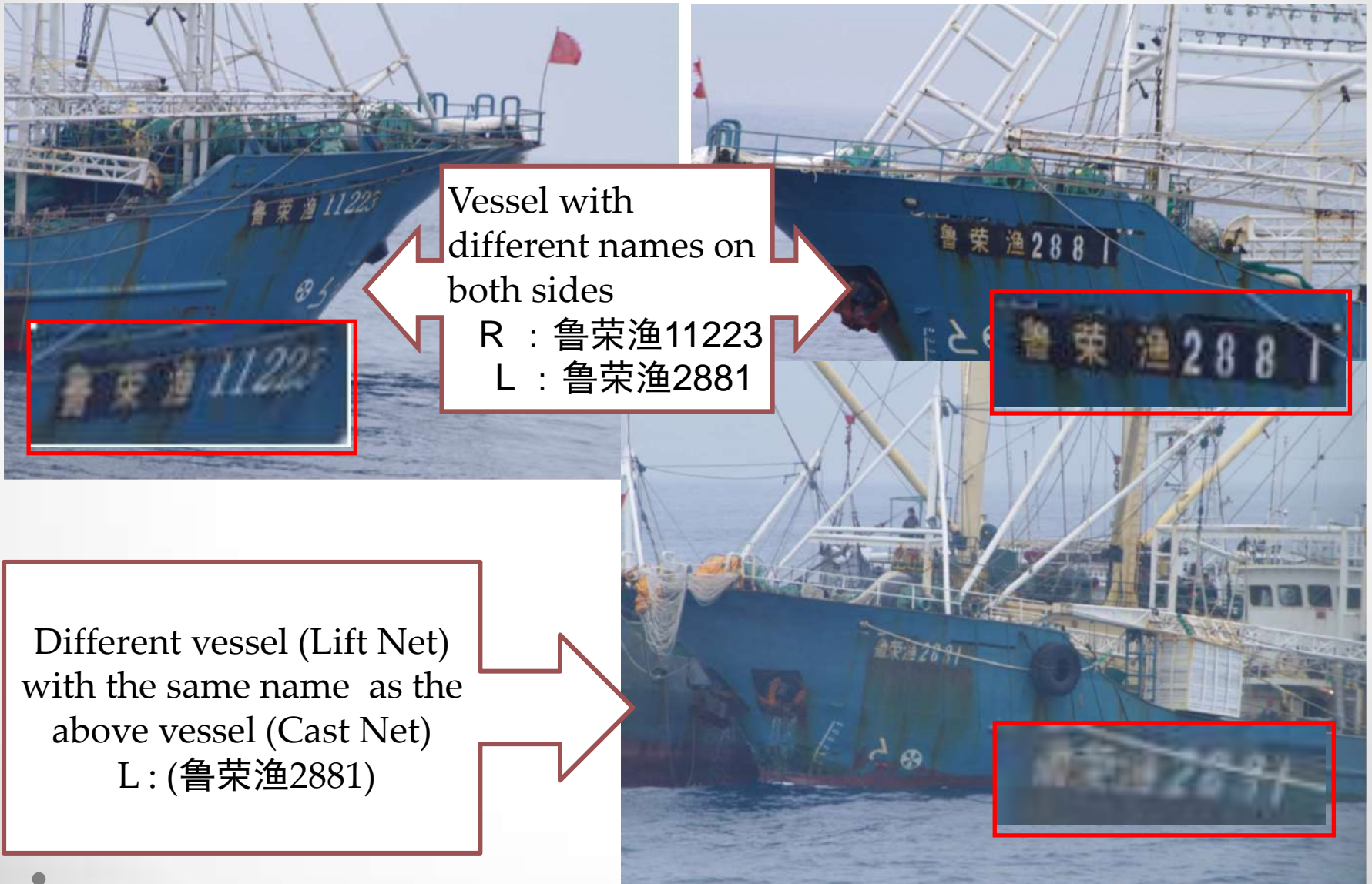
Large Cast Net Vessel



Tiger Net Vessel


Examples of suspected illegal vessels

Falsified Vessels in the North Pacific




Examples of suspected illegal vessels

According to FAO Fishing Gear Classification, they are categorized as “purse seine” but...



Lift Net type
「鲁荣渔 2882」

Vessels with the same name
but different fisheries type
(impossible to switch)



Large Cast Net type
「鲁荣渔 2882」

Examples of suspected illegal vessels

Vessels concealing its names (North Pacific)

Two-Vessels Trawler
「鲁荣渔515●●」



Concealing a part of its name



Examples of suspected illegal vessels

Vessels concealing its names (North Pacific)

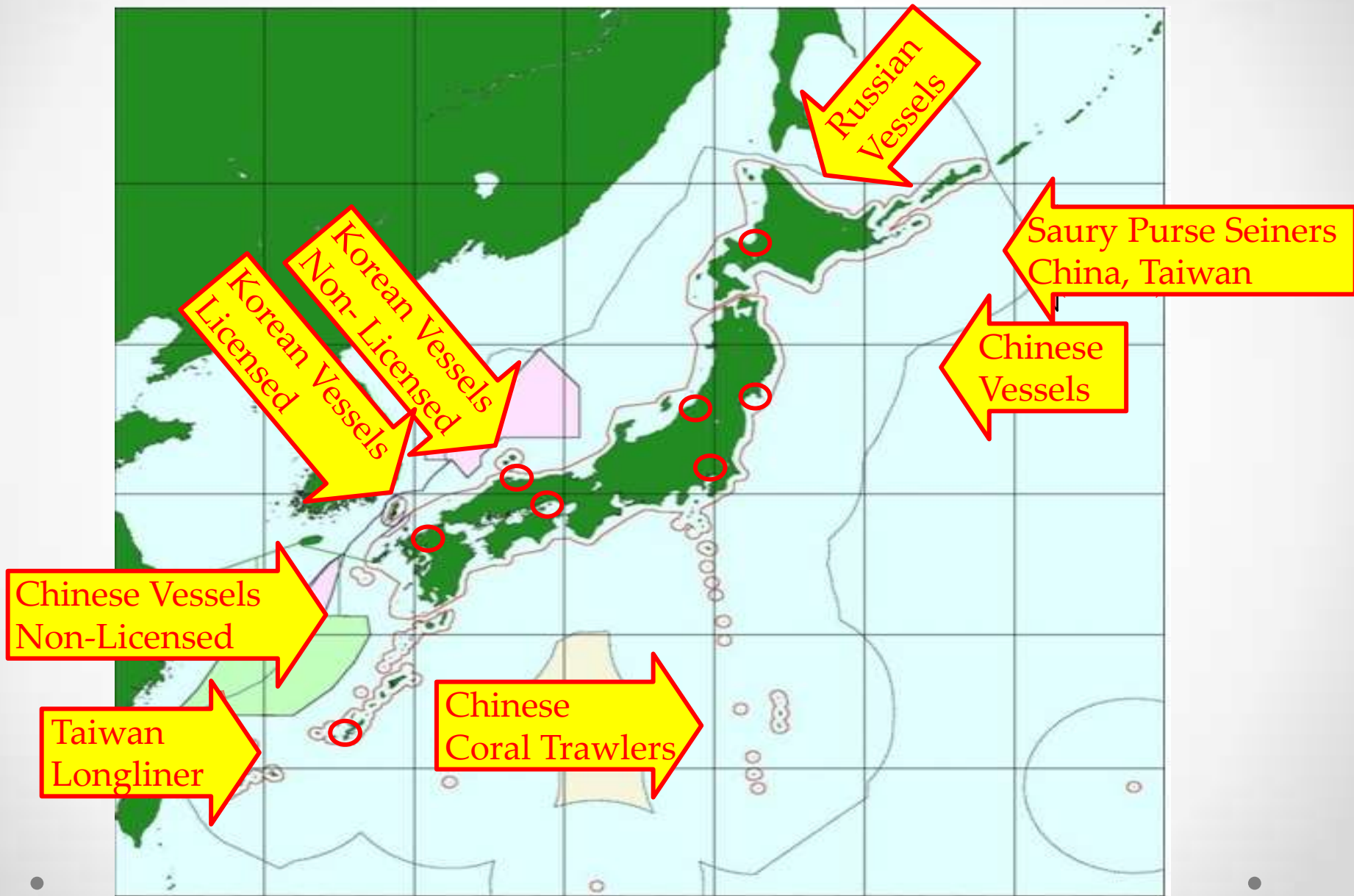
Two-Vessels Trawler
「鲁荣渔8599」

Name on right side is concealed fully



Poor painting on left side but is readable a part of its name

Enforcement by Fisheries Agency



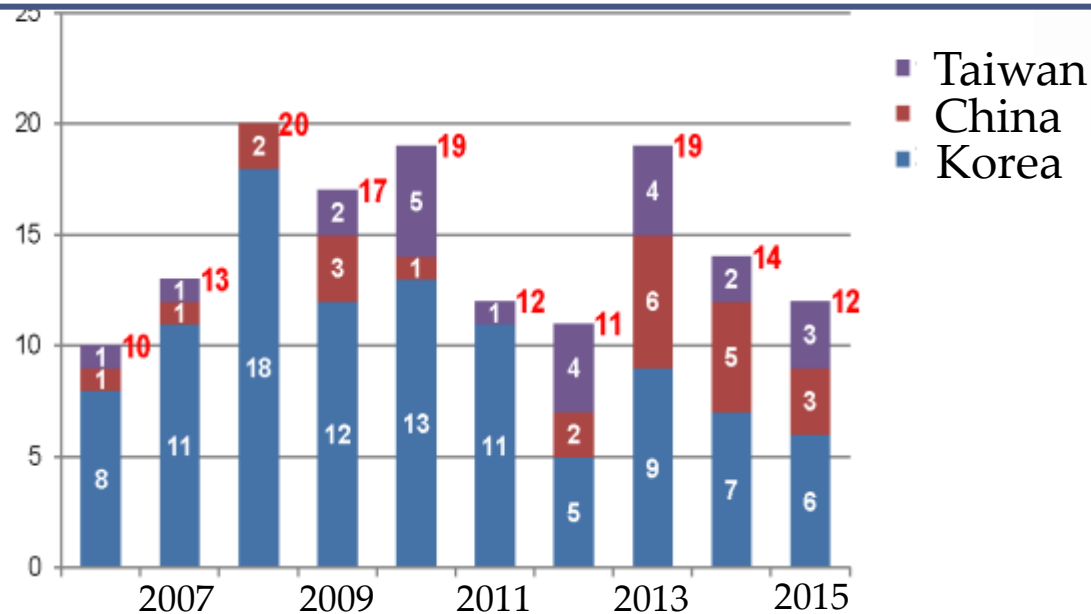
Enforcement by Fisheries Agency

Enforcement Capacity		2010	2015
Enforcement Vessels	Owned	6	7
	Chartered	32	37
	Total	38	44
Enforcement Aircraft		4	4

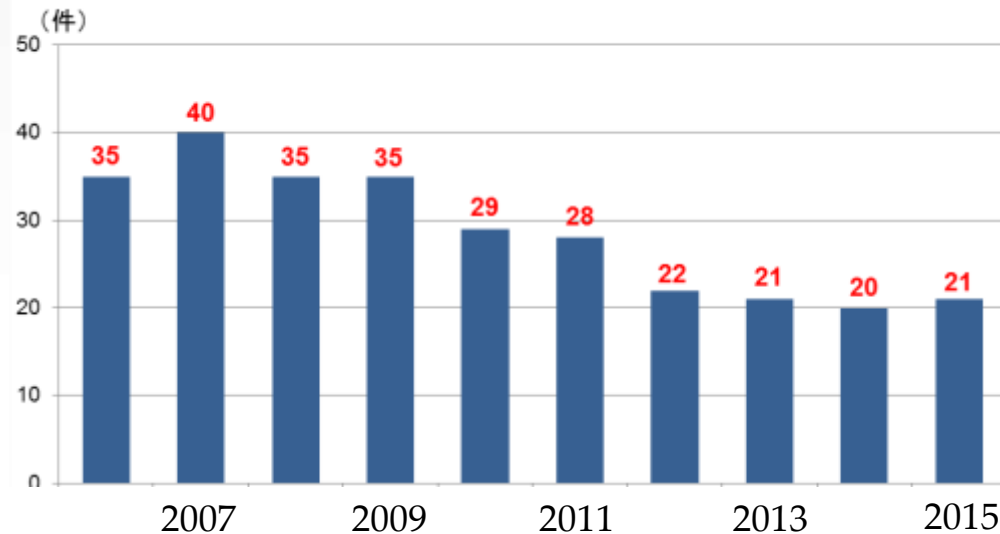


Seizure of Foreign Fishing Vessels

- 10 – 20 Foreign Vessels are seized every year by Fisheries Agency
- The highest in number is Korea, followed by China and Taiwan



Confiscation of Poaching Gear Set by Foreign Vessels



Crab pots set illegally in Japan's EEZ



Gears confiscated in Japan's EEZ

PSMA Ratification by JAPAN

- JAPAN recognizes **the importance of PSMA** in the fight against IUU fishing.
- JAPAN is reviewing domestic laws and regulations if they match the provisions of PSMA, in order to **ratify PSMA as early as possible**.
(Next Regular Session of the Diet at the earliest.)

Port State Measures Domestically Implemented

Act on Regulation of Fishing Operation by Foreign Nationals (1967 -)

- **Requirement of Mandatory permission** when foreign fishing vessels are entering port of Japan.
- **Denial of entry into port** to IUU fishing vessels, especially those on RFMOs' IUU lists.
- **Deportation order** to foreign fishing vessels, which are turned out to have been engaged in IUU fishing before entering into port of Japan.

Possible Future Cooperation

Capacity development of port states is essential to eliminate IUU fishing in developing states.

- Technical assistance to the developing states through FAO trust fund project.
- Active contribution to the establishment of the assistance mechanisms under the Article 21 of PSMA.