

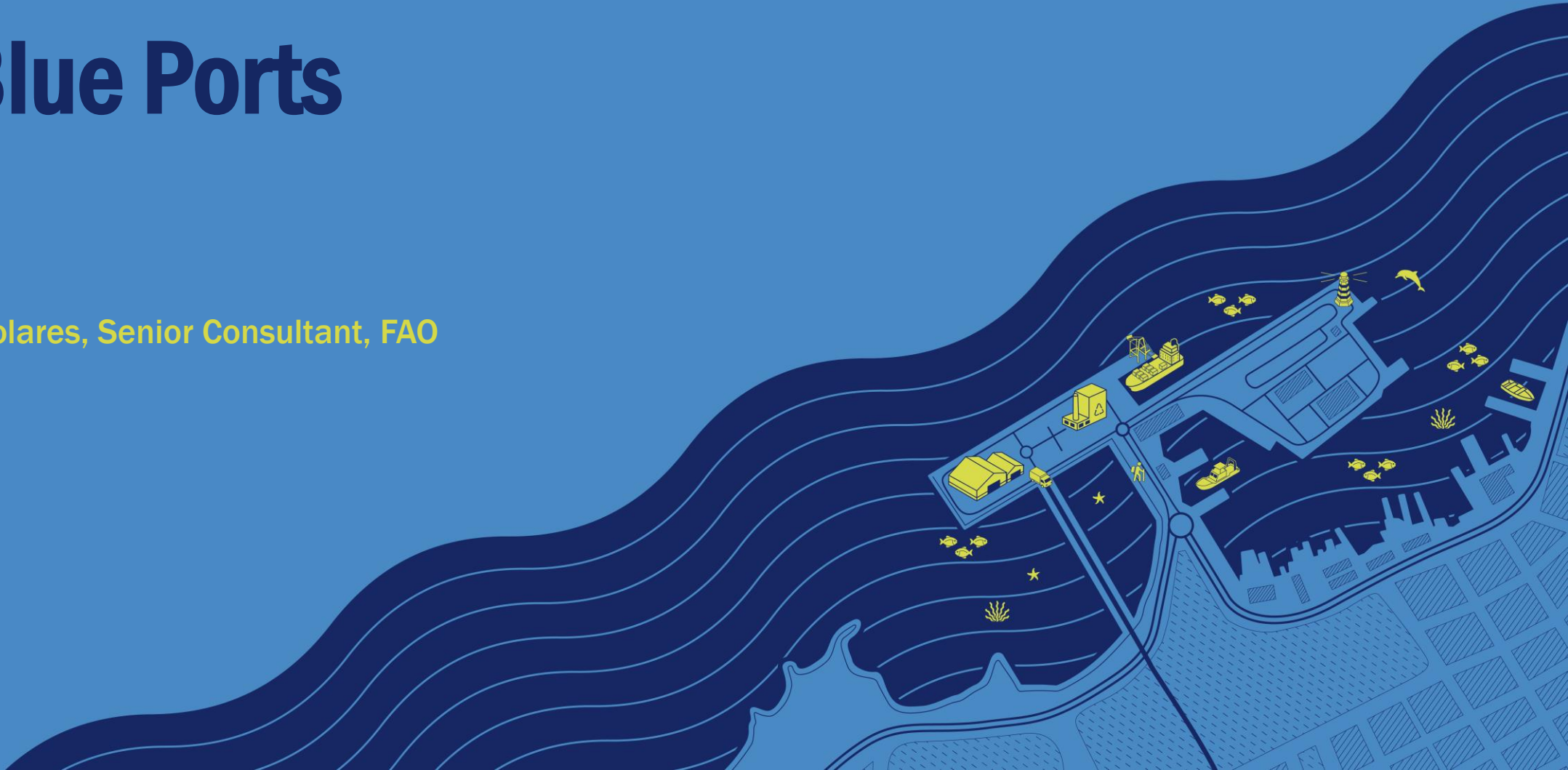


Food and Agriculture
Organization of the
United Nations

FAO Blue Ports

5 March 2026

Ms Yolanda Molares, Senior Consultant, FAO



INTRODUCTION

Why ports are important for the sustainable development of coastal communities?

- Coastal communities are at the heart of all policies and actions related to the strategic and operational planning of coastal areas.
- When adopting a sustainable territorial development approach, it is essential to consider the full range of economic activities, social interactions, and the environmental context. In this regard, ports play a key role.
- Ports are spaces of knowledge and dynamism where multiple activities converge, directly influencing people's lives.
- Maximizing this impact enables ports—whether fishing, commercial, or mixed—to become sources of value that can sustain both local development strategies and their operational implementation.





BARCELONE





Sustainability challenges in fishing ports

Social



- Employment
- Decent work
- Equality
- Food security
- Training for blue jobs

Economic



- Innovation
- Trade
- Competitiveness
- Level playing field
- Digitalization
- Green infrastructure and equipment
- IUU fishing

Environmental



- Marine resource management
- Pollution
- Carbon footprint reduction
- Climate change
- Waste management and circular economy
- Ecosystem services
- Just transition: green and clean energy
- Resilience and climate change adaptation

Governance



- Strategic planning integrating the sustainability approach
- Involvement of internal and external stakeholders in the planning and monitoring process
- Impact monitoring program
- Port-city integration
- Public-private cooperation approach
- Availability of a portfolio of projects and strategically potential investable initiatives
- Appropriate financing instruments

How are these challenges addressed?

Addressing them requires a comprehensive and holistic response that involves all actors across the fisheries value chain.

What is a Blue Fishing Port?

It is a hub for regional, national, and local sustainable development, generating value across the social, economic, and environmental dimensions.

Blue Fishing Ports



What is a blue fishing port?

Pictures taken from the BPI network



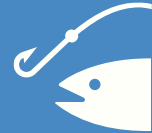
Benefits to Become a Blue Port



Improvement of the fishing port's strategic planning through the integration of social, economic, and environmental dimensions.



Strengthening the relationship and cooperation between academia, local and national governments, the private sector, and civil society.



Improvement of public-private cooperation in the implementation of strategic projects and actions.



Strengthening innovation by attracting investors and entrepreneurs.



Planning investments in sustainable infrastructure.



Improvement of commercial relations in terms of volume and value along the port's value chains.

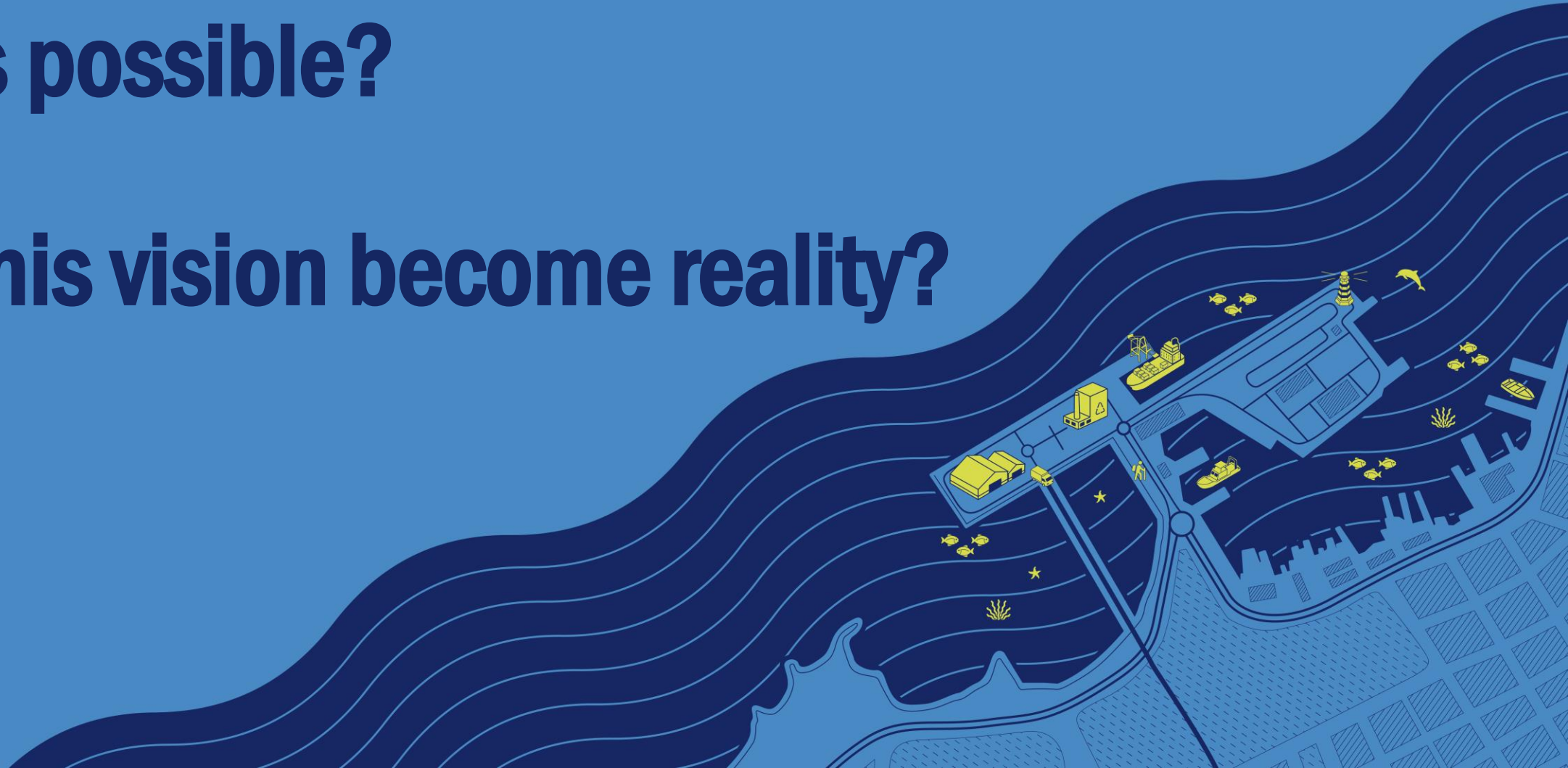




Food and Agriculture
Organization of the
United Nations

Is this possible?

Can this vision become reality?



Environmental Good Practices



- **Living Ports Project:** Restoration of seabeds, biodiversity recovery, and citizen observatory. Port of Vigo, Spain.



- **Coral Reef Monitoring:** Port of Khalifa, Abu Dhabi.



- **Waste Management with Artisanal Fishermen:** Port of Salaverry, Peru.



- **Promotion of Renewable Energy and Green Hydrogen:** Port of Shanghai, China.



Coral Transplantation, Abu Dhabi

Economic Good Practices



- **Smart Port Lab:** A business incubator and accelerator focused on the port industry, located at the Port of Bahía Blanca, Argentina.



- **Paperless:** Enhancing administrative efficiency by digitising processes at the Port of Bridgetown, Barbados.



- **Modernization of the Fishing Market** (unloading and sales): Implemented at the Port of Busan, South Korea.



- **Seafood Hub:** Facilitating export promotion and adding value throughout the supply chain at Port Louis, Mauritius.



Port Louis, Mauritius

Social Good Practices



Operators in Blue Careers Programme, Porto do Açu

- Blue Careers Program and Job Offer Platform: Port of Açu, Brazil.

- Training Program: Blue Careers: Port of Cork, Ireland.

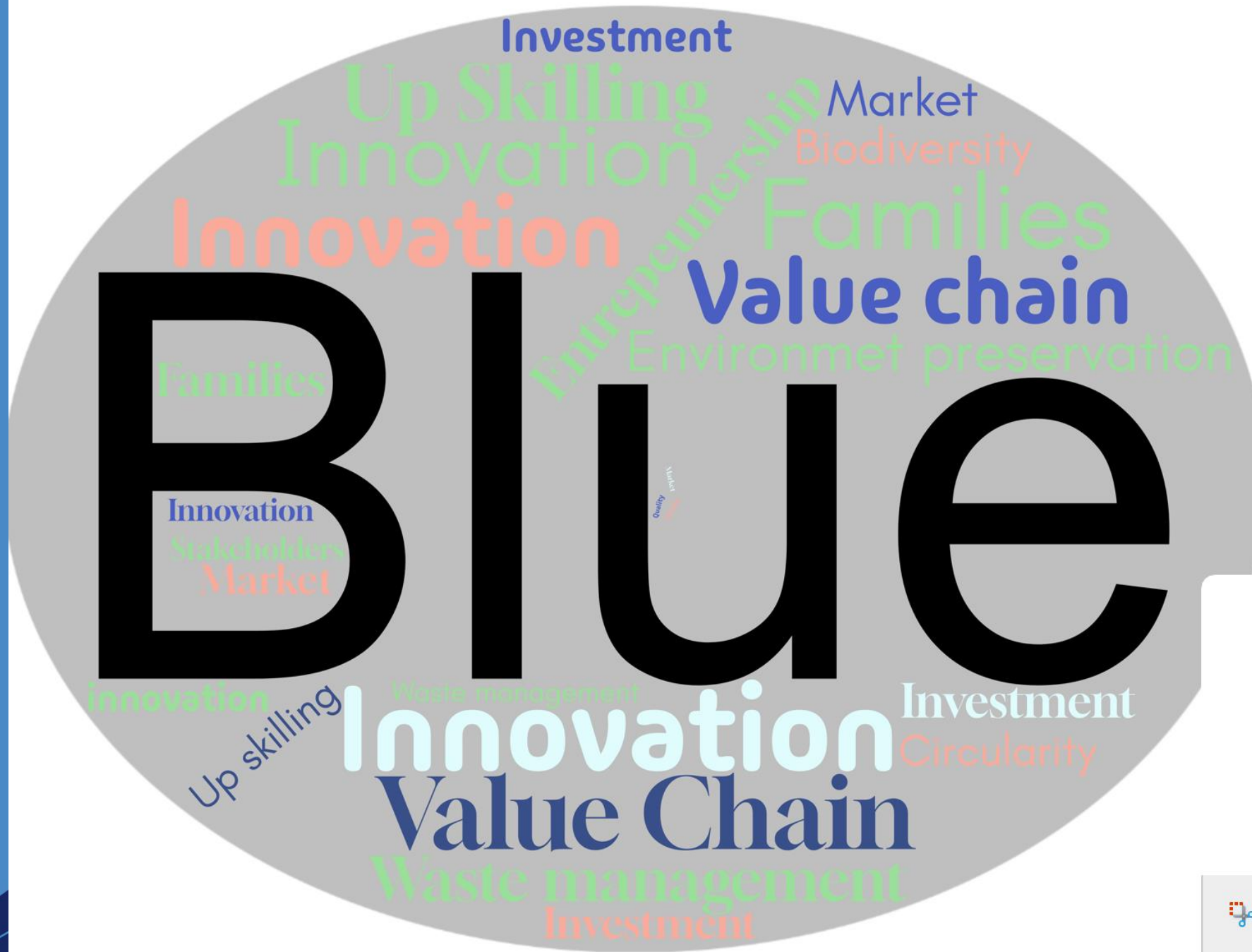
- Welfare Committees, Social Inclusion, Social Pact: Port of Vigo, Spain.

- Environmental Training Network for Ports: SICA/COCATRAM.



Food and Agriculture
Organization of the
United Nations

In summary...
What are we
talking about?



**This all ...
needs...**

Research
Vocational Training
University

Academia

Value chain
private
sector

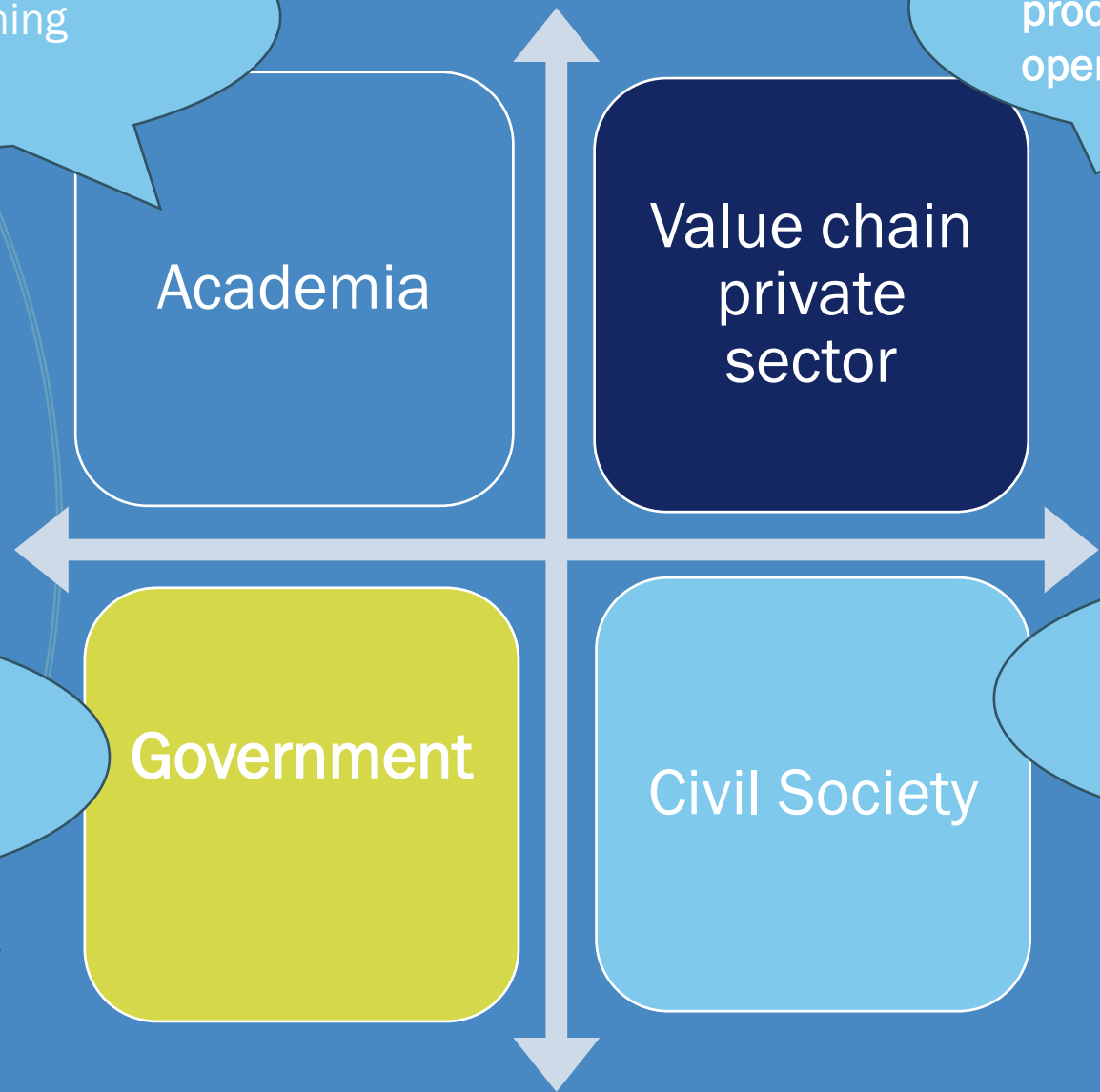
Fishermen,
processors, vendors,
operators, Business,.

Port authorities
Fisheries authorities

Government

Civil Society

NGOs, Foundations,
Associations,
others...



Research

Fishermen,

This a
need

Cooperation.....

leaving no one behind!!

ons,

Research

Fishermen,

This a
need

Planning....

leaving no one behind!!

ons,

Research

Fishermen,

This a
need

Take Action

leaving no one behind!!

ons,

Research

Fishermen,

This a
need

Commitment

leaving no one behind!!

ons,

Research

Fishermen,

This a
need

Time

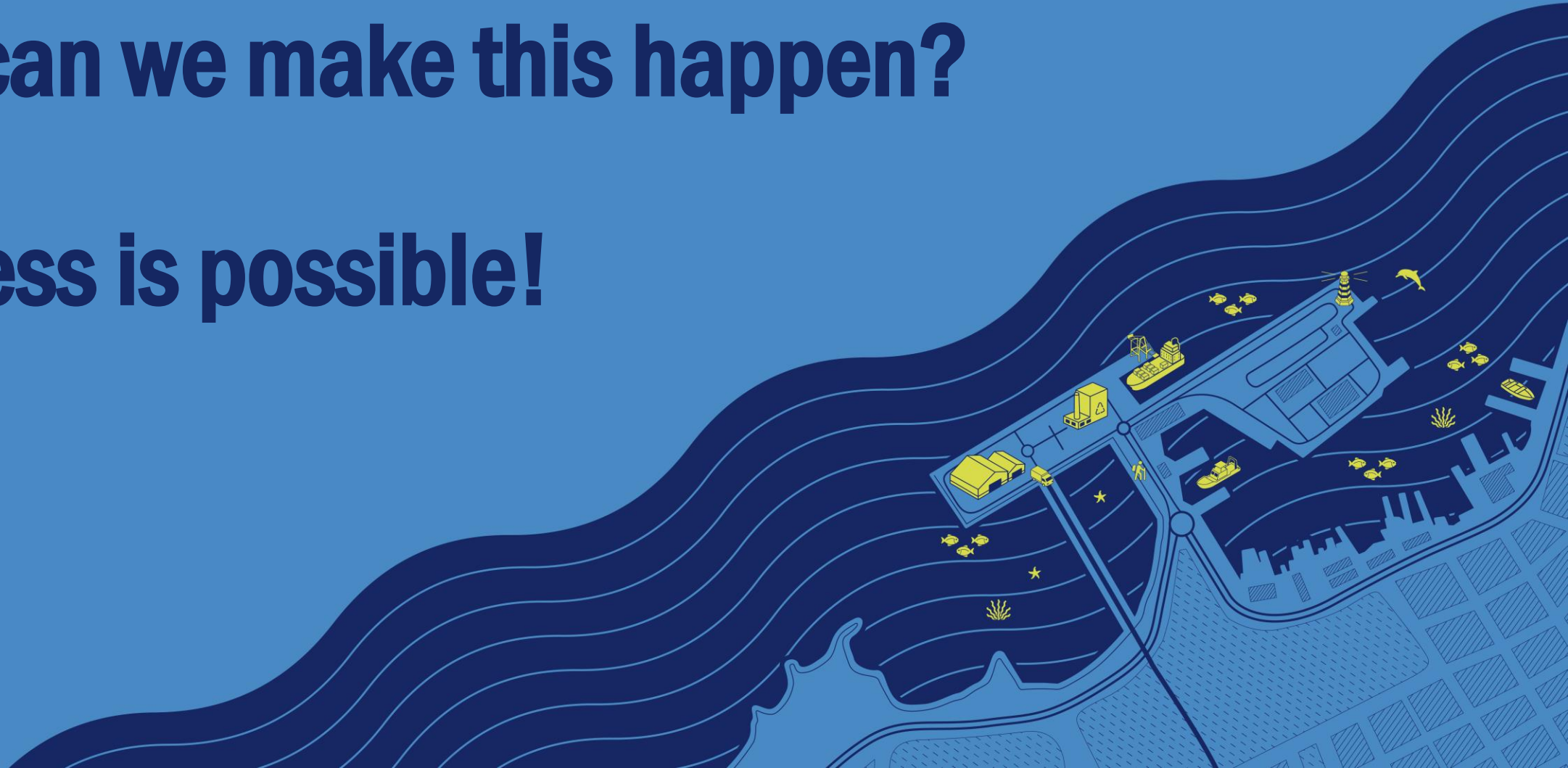
ons,



Food and Agriculture
Organization of the
United Nations

How can we make this happen?

Success is possible!



How to become a Blue Port?

- Each port has **unique characteristics**, so it is essential to develop roadmaps tailored to its specific context.
- At the same time, good practices developed in other ports can serve as a **reference** and should be considered when designing these roadmaps.
- Ports do not operate in isolation: they are **interconnected**, just like the fisheries sectors, which share resources, markets, and common challenges.

Read and download the Roadmap to a Blue Port:

<https://openknowledge.fao.org/handle/20.500.14283/cc5789en>



Food and Agriculture
Organization of the
United Nations

ROADMAP TO A BLUE PORT



Steps of the process

Identified through best practices and the involvement of ports and fisheries authorities

Setting the scene. Governance. *Preliminary diagnosis and mapping.*



Design of the roadmap for the Blue Transformation process at a fishing port.



Implementation of the roadmap.
Specific projects and actions



Evaluation and impact measurement.

STEP 1: ACTIONS

1

The frameworks of the Blue Economy (e.g. sustainable use) and Blue Transformation (e.g. innovation in management) are used in each of the pillars for the transformation to a Blue Port, as described below.



Mapping and analysing stakeholders

Stakeholder agreement

Diagnosis of the port's current status

Identifying key drivers of sustainable economic prosperity and strategic axes for enhancing competitiveness.

A baseline should be established to enable effective monitoring and evaluation, ensuring that the project's impact is accurately measured against its defined results

 Select each action to learn more.

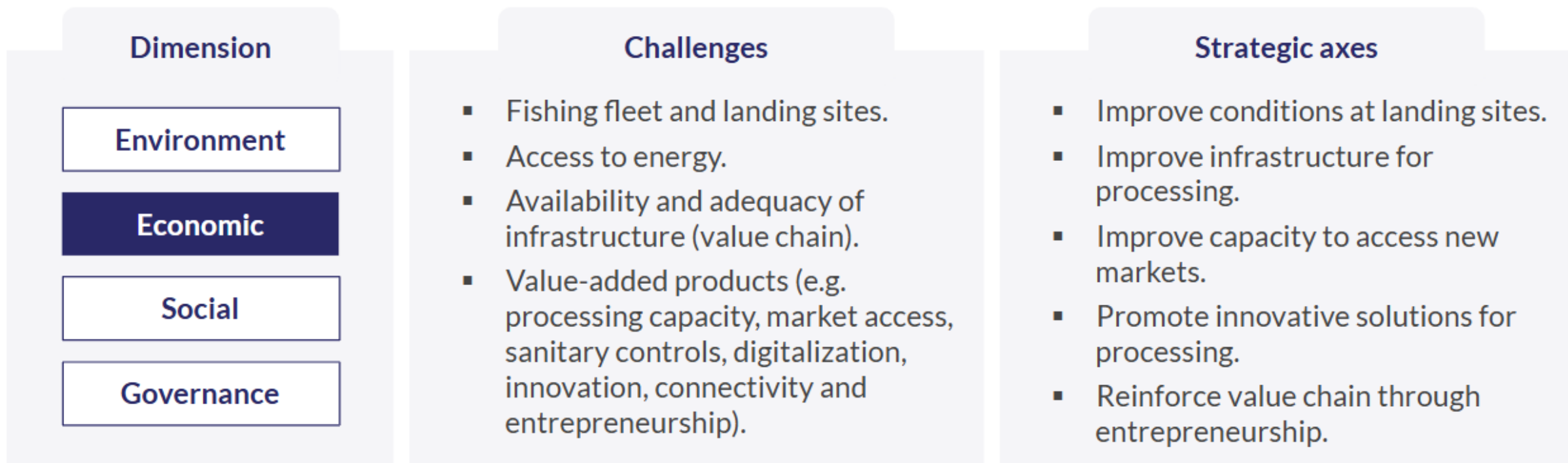


Each action is explained separately in this lesson.

STEP 2: DEVELOPING THE ROADMAP

2

Development of the roadmap is achieved through the identification of key drivers of sustainable economic prosperity and strategic axes for enhancing competitiveness, as described below.



 *Select each dimension to learn more.*



It is important to outline actions with key performance indicators and budgets, while maintaining working groups from the diagnostic phase to sustain stakeholder involvement and eventually support implementation.

STEP 3: ACTIONS

3

The implementation phase should follow six steps, with associated actions, as described below.



Assignment of responsibility

Allocation of technical resources

Allocation of financial resources

**Implementation of projects
and actions**

Emphasize participatory process

Foster collaboration and
knowledge exchange

Next, it is important to begin with priority projects and actions identified during the roadmap design phase of Step 1.

If new projects arise, apply criteria to assess alignment with strategic goals and potential for securing funding.

! Use project management tools such as GANTT charts and work breakdown structures to track progress and manage resources effectively.

MONITORING COMPLIANCE

Once the port context has been defined, a monitoring compliance programme must be followed. This monitors the development of the project and ensures that standards are consistently met and maintained, and results achieved. The process informs decision-making regarding the impact of the Blue Port Roadmap, as illustrated below.

Establishing a
baseline

Designing KPIs

Implementing plan
for data collection

Analysing data

Developing a
scoreboard

Development of a scoreboard enables the presentation of baseline data and demonstrates the true impact of activities on the port's competitiveness and sustainability.

This evaluation process is essential for informed decision-making, enabling adjustments and assessing which actions best align with the port's current situation. This allows adaptations to be made to enhance implementation and ensure long-term effectiveness.

 *Select each tab to learn more.*



The monitoring compliance programme should be designed during the roadmap's planning phase, prior to implementation.



enhances community well-being,

BPI Activities



- 26 **countries**. Representation from fisheries administrations and port authorities
- Collaboration + 20 global, **regional and national public and private** organizations & associations
- 10 **training workshops** (in-person and online) + field visits
- 7 **global** BPI workshops
- 8 **webinars**
- 3 **working groups** with 8 online meetings (discussion and design of projects)
- + 5 **publications**
- 1 **online repository** of good practices
- 1 **website**
- 1 **FAO e-Learning Academy** Program

BPI Active Countries



Colombia:
Modernization of
Fishing Port of
Tumaco

India:
Implementation
of 2 pilot projects
(Government and
FAO)

Argentina:
National strategy
for Argentinean
Blue fishing ports

**Sao Tome &
Principe:**
port infrastructure
rehabilitation, new
equipment for coastal
communities, and
training on
commercialization
(AfDB and FAO)

Thank you!

Contact:

Yolanda.Molares@fao.org

Blueports-Initiative@fao.org

Web:

<https://www.fao.org/in-action/blue-ports-initiative/>

FAO E-learning course on Blue Ports:

<https://elearning.fao.org/course/view.php?id=1307>

