



# **CURRENT LANDING INFRASTRUCTURE IN GHANA FISHERIES**

**“Blue Ports” initiative workshop: Towards the implementation of the blue transformation of fishing ports in the ATLAFCO region**



**MOROCCO-TANGER  
4<sup>TH</sup> – 6<sup>TH</sup> MARCH 2026**

**PRESENTED BY: PHILOTHEA LAURENTIA OSEI-BONSU**

**FISHERIES COMMISSION- GHANA**

# CONTENT

---

- State of Ghana Fisheries
- Fleet Type
- Landing Sites/beaches
  - Major Fishing Harbours
  - New Developments
  - Fish processing and Cold chain facilities
- Current Infrastructure Conditions
- Challenges
- Socio-Economic Implications
- Opportunities
- Strategic Priorities
- Developments Partners

A photograph of a harbor scene in Ghana. In the foreground, a white boat with blue and yellow accents is visible. The boat has the name 'ISAIAH' and the reference '4:1:10' painted on its side. Further back, another boat is labeled 'VIM' and 'GR-KK-190'. A person is standing on a boat in the middle ground, holding a long pole. The background shows a harbor with several buildings, including a prominent one with a classical facade. The sky is overcast.

# State of Ghana Fisheries

# Fish Production in Ghana



**Marine  
Capture  
~442,361 MT**



**Inland  
Capture  
~131,552 MT**




**Aquaculture  
~121,809 MT**

Source: MoFA/FC 2024



# FLEET TYPE

---

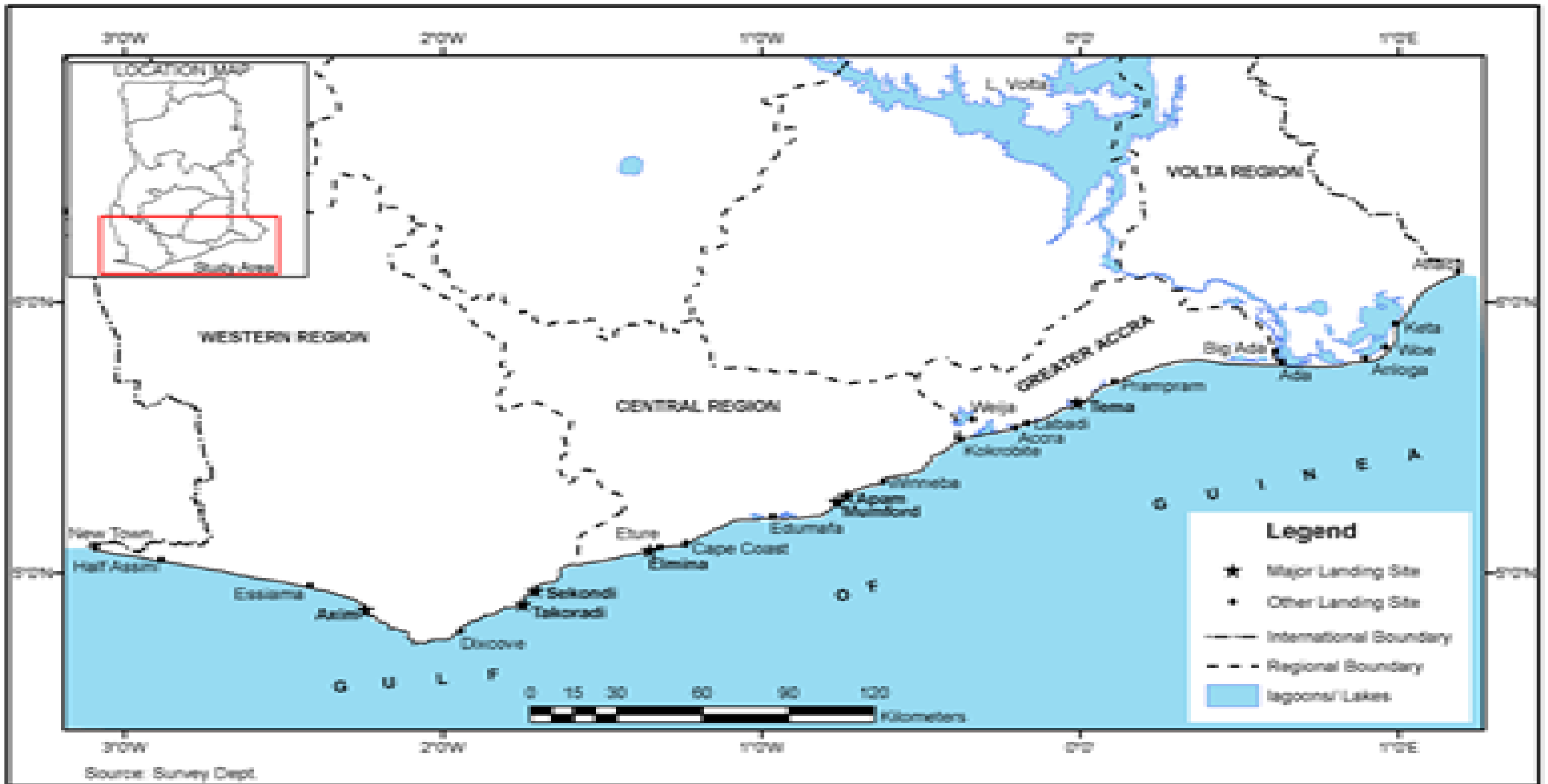


<b>FLEET</b>	<b>FLEET NUMBER</b>
<b>Artisanal</b>	<b>14,031</b>
<b>Semi-industrial</b>	<b>224</b>
<b>Industrial</b>	<b>68</b>

---

# Coastline OF Ghana

---



# Landing Beaches in Ghana

---

# Importance of Fish Landing Infrastructure



Ensures safe landing and launching of fishing vessels and canoes

Improves fish quality and food safety and national food security

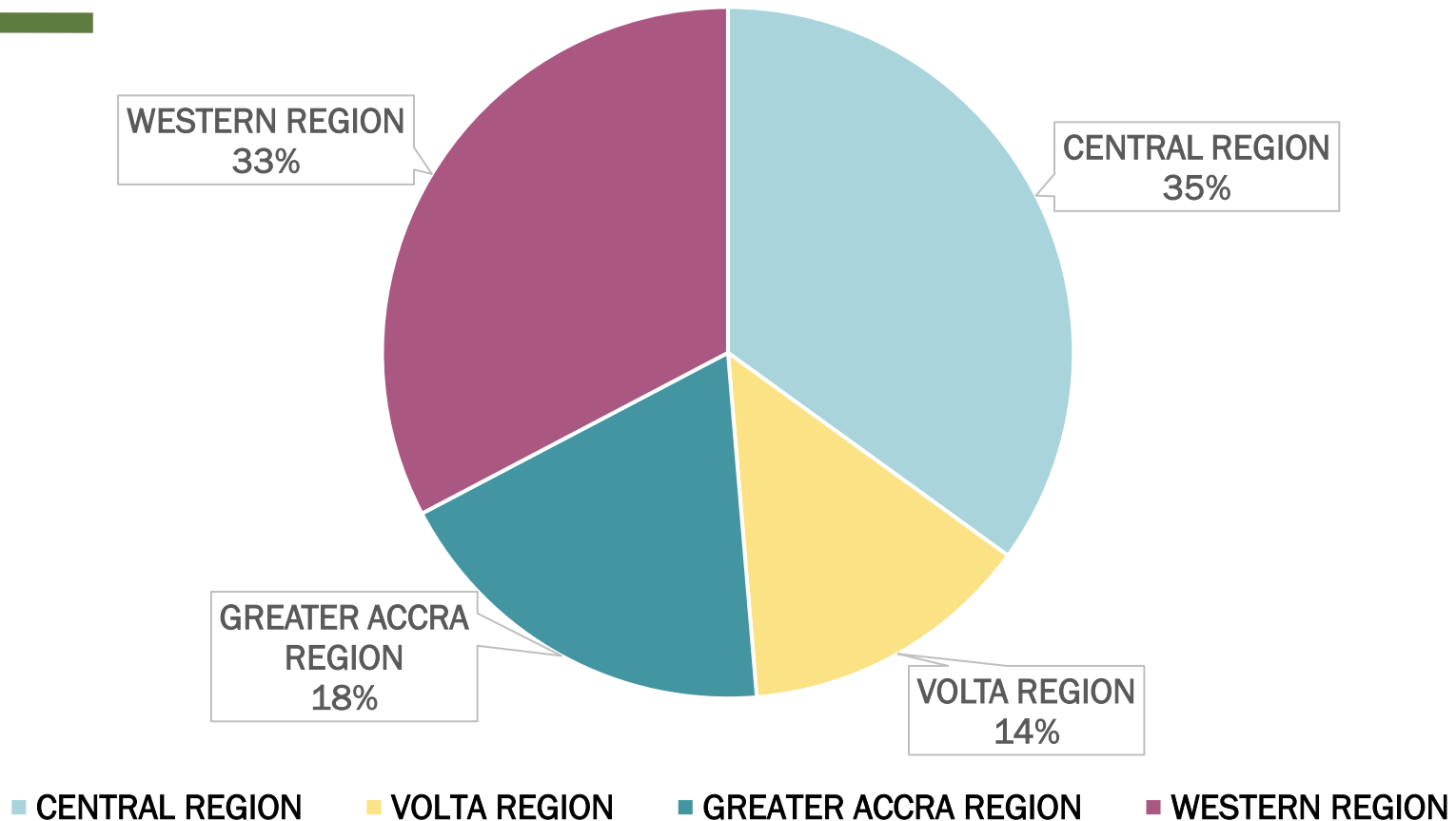
Reduces post-harvest losses

Supports traceability and value addition

Enhances fisher livelihoods and coastal economies

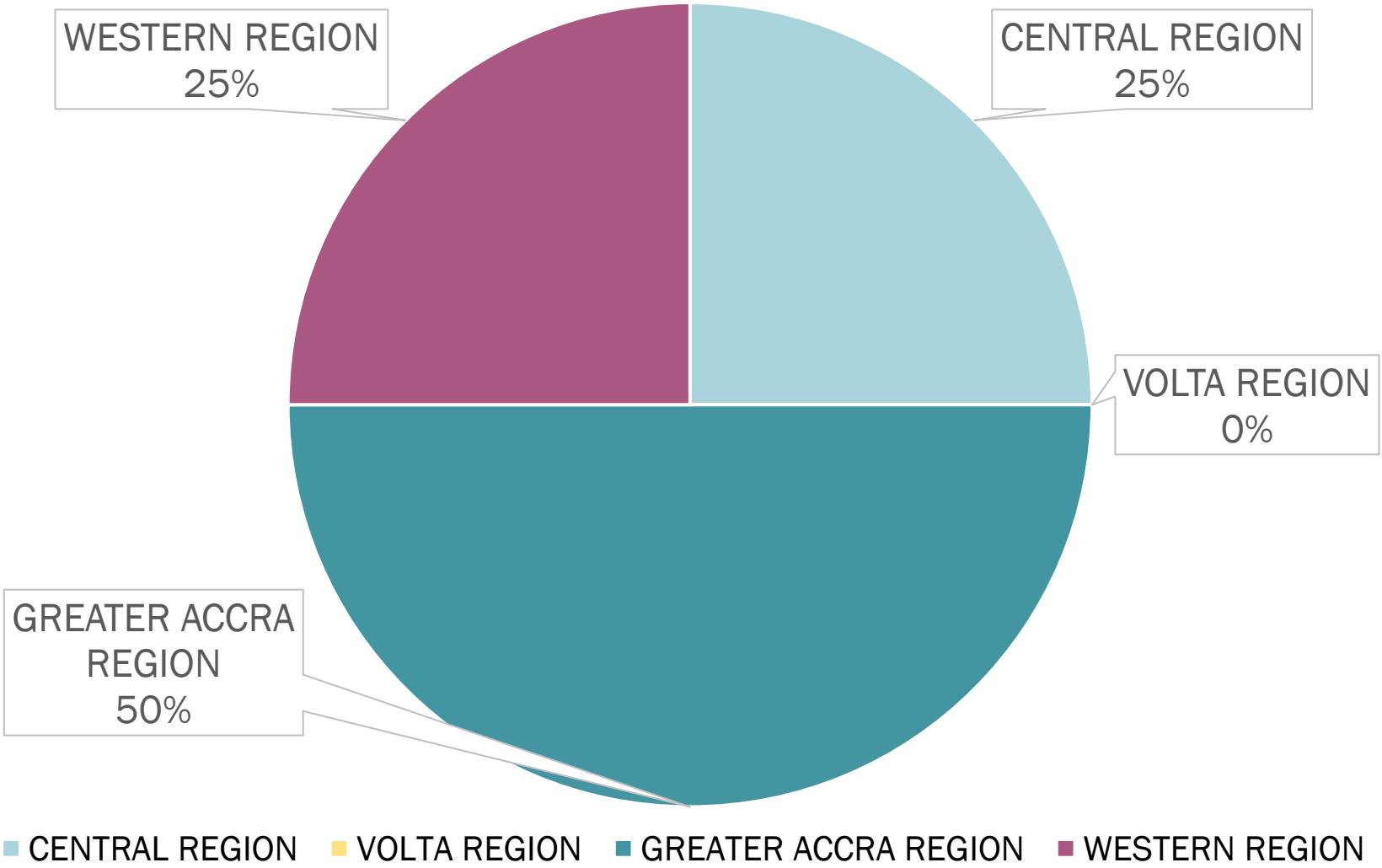
# Overview of landing beaches in Ghana

DISTRIBUTION OF LANDING SITES AMONG COASTAL REGIONS



- 263 fish landing beaches in four coastal regions

# DISTRIBUTION OF FISHING HARBOURS AMONG REGIONS



# Major Fishing Harbours

- Tema Fishing Harbour, Tema
- Albert Bosomtwi-Sam Fishing Harbour, Sekondi
- Elmina Fishing Harbour, Elmina
- Jamestown Fishing Harbour, Jamestown-Accra



# TEMA FISHING HARBOUR

- Major fishing harbour within the Tema Port area, covers an area of about 40 hectares (approximately 400,000 m<sup>2</sup>).
- Serves industrial, semi-industrial, and artisanal fisheries
- Includes inner harbour, outer harbour, and canoe basin.
- Provides berths, fish markets, cold storage, and processing facilities.
- Supports livelihoods, fish trade, and national food security.



# BOSOMTWI-SAM FISHING HARBOUR, SEKONDI

- Located in Sekondi, serving as a major fishing harbour in Ghana's Western Region.
- Covers an area of about 16 hectares, with basin, quay, and support zones.
- Mainly supports artisanal and semi-industrial marine fishing activities.
- Provides landing sites, berths, fish handling, and marketing facilities.
- Supports local livelihoods, fish supply, and the coastal economy of the Western Region.



# ELMINA FISHING HARBOUR, ELMINA

- Located in Elmina, Central Region, it is one of Ghana's oldest and most important fishing harbours.
- The harbour covers an area of about 13 hectares, including the basin, quays, and canoe landing areas.
- Primarily serves artisanal and semi-industrial fisheries, with a large canoe fleet.
- Equipped with fish landing sites, markets, cold storage, and basic processing facilities.
- Plays a key role in local livelihoods, fish trade, and food supply along Ghana's central coast.



# JAMESTOWN FISHING HARBOUR, JAMESTOWN-ACCRA

- Located in James Town, Accra, it is a traditional fishing harbour and canoe landing site.
- Covers an estimated area of about 4–5 hectares, mainly along the shoreline and landing beach,
- It includes a 200-capacity fish market, 60-tonne ice-making plant, 200-tonne cold store, and a nursery/daycare for traders
- Primarily serves artisanal canoe fisheries, with a high concentration of local fishers.
- Plays an important role in sustaining livelihoods and fish supply for coastal communities in Accra



*Projects are ongoing to build or upgrade some fishing ports/landing sites; locations at*

- Axim
- Dixcove
- Winneba
- Senya Beraku
- Gomoa Fetteh
- Moree
- Mumford
- Teshie
- Keta



# **New Developments**

---

# Cold Store Infrastructure at Fishing Ports and Landing Beaches in Ghana



## Industrial Fishing Harbours (Strongest Cold-Chain Capacity)

- Tema Fishing Harbour serves industrial trawl and tuna fleets.
- Albert Bosomtwi-Sam Fishing Harbour serves semi-industrial vessels, with additional nearby commercial cold stores.



## Modern Harbour / Processing Hub (Moderate Capacity)

*Elmina Fishing Harbour has moderate cold storage and refrigeration-enabled processing facilities, plus some private cold stores, but capacity is still insufficient for large artisanal landings.*



## Landing Beaches with Government Refrigeration (Limited Coverage)

*Facilities exist at selected sites such as Shama, New Takoradi, Half Assini (Western Region); Kormantse and Nyanyano (Central Region); and Prampram (Greater Accra), but these are limited in scale.*



## Landing Beaches with Small Private Cold Stores

*Nungua, Axim, and Cape Coast have mostly small, privately operated cold storage facilities with constrained capacity.*



## Landing Beaches with Little or No Cold Storage (Major Gap)

*Many artisanal sites—including Winneba, Apam, Mumford, Keta, Ada, and several Volta Region beaches—rely mainly on smoking, salting, or immediate sale due to lack of functional cold-chain infrastructure*

# Locations of Fish Processing plants

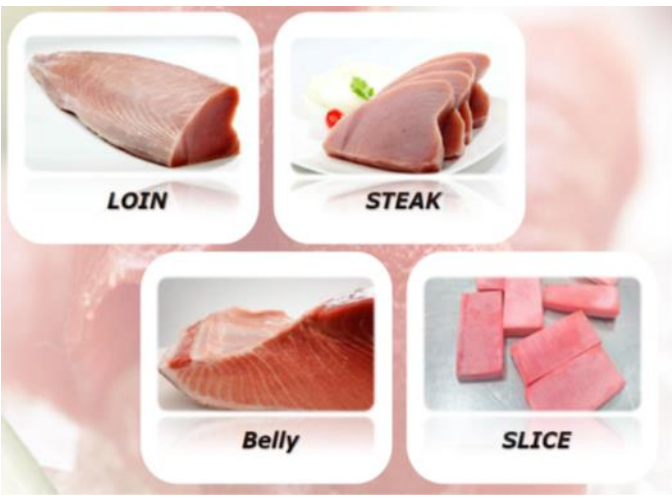
- Elmina
- Winneba
- Axim
- Senya
- Tema
- Mfantseman

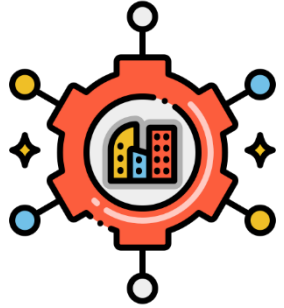


# Fish Processing and Cold Chain Facilities

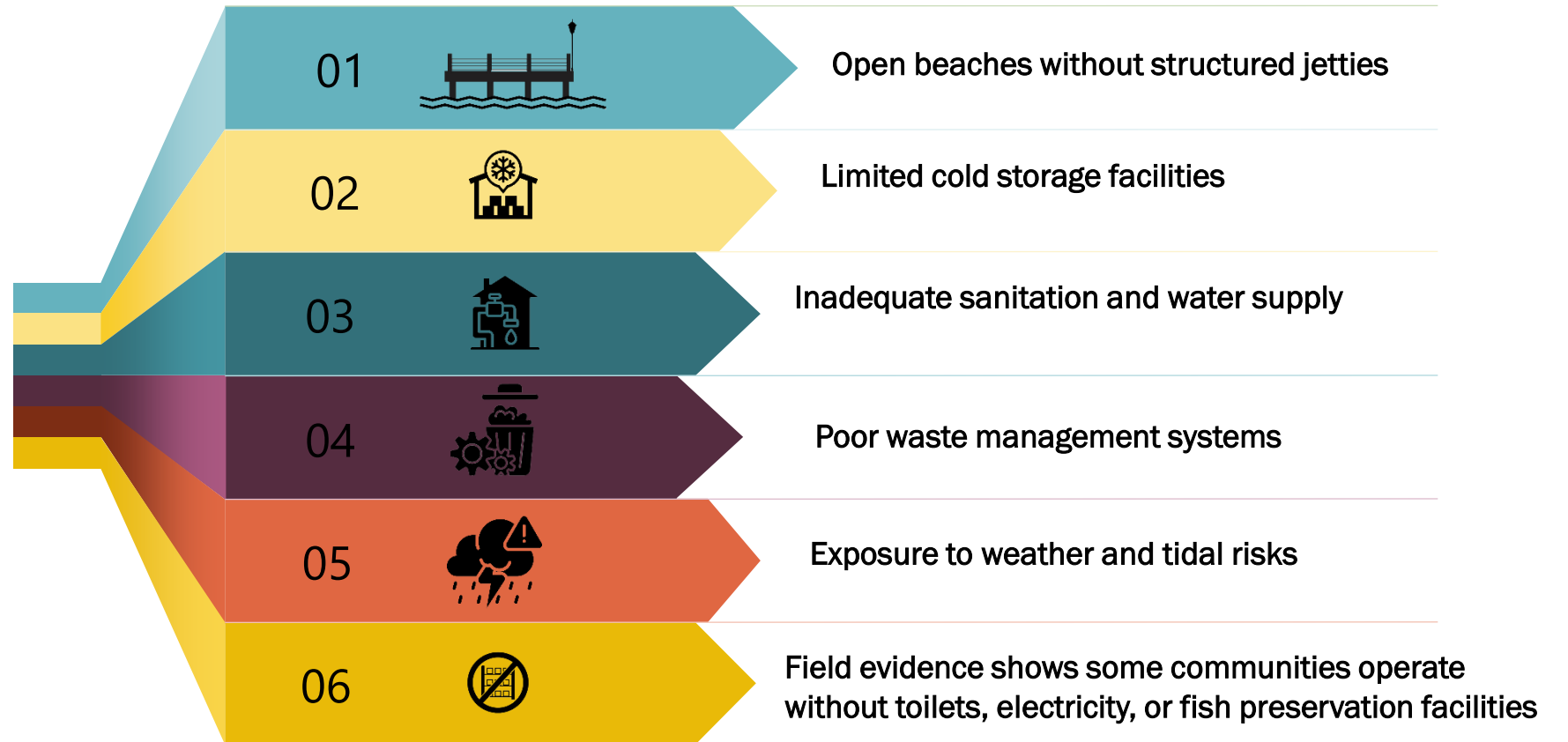


# Fish Processing and Cold Chain Facilities





## Current Infrastructure Conditions at the landing beaches



# Key Infrastructure Challenges

## Physical Challenges



**1.** Coastal erosion and flooding



**2.** Sand mining and shoreline encroachment



**3.** Landing areas being converted to other uses

## Operational Challenges



**1.** Weak maintenance systems

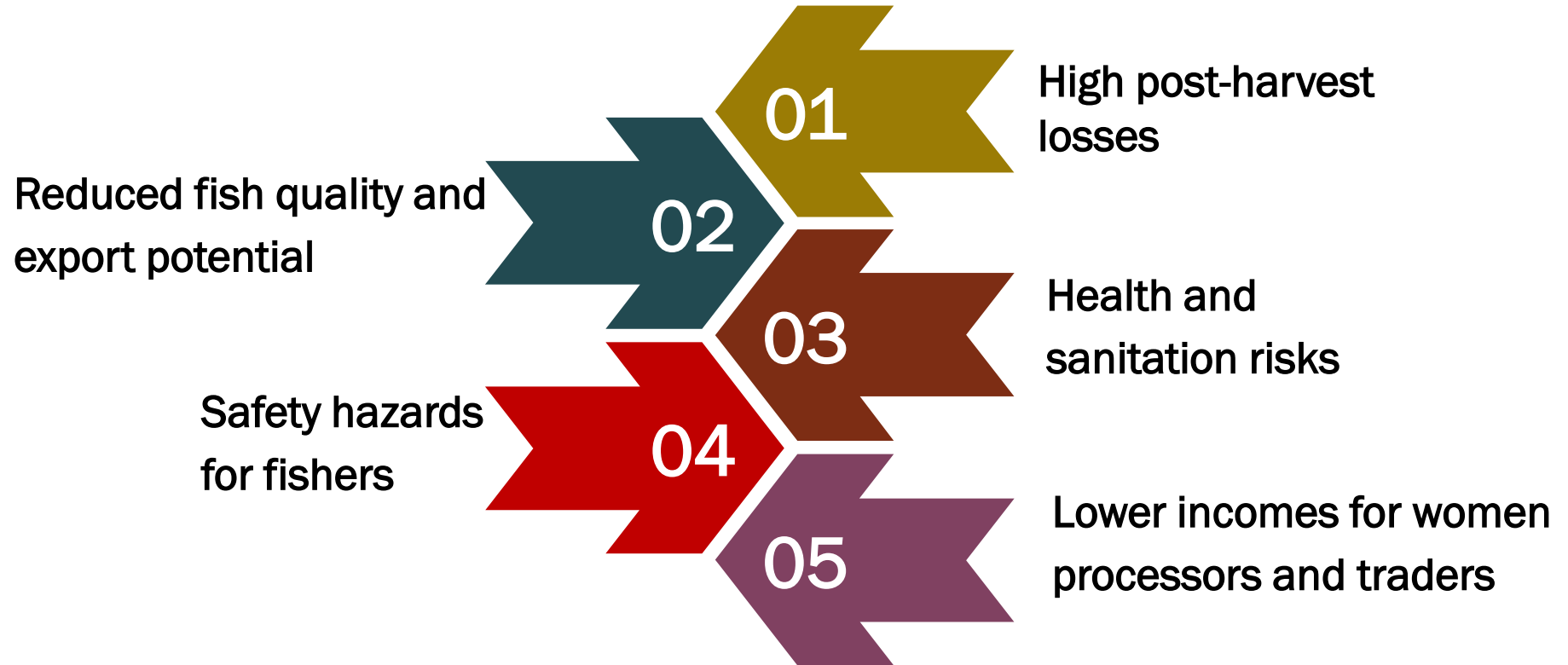


**2.** Limited management structures



**3.** Informal landing and trading systems

# Socio-Economic Implications



# Emerging Opportunities

Ghana is moving toward:

- Modern coastal fishing ports
- Integrated landing site management
- Blue Economy and Blue Transformation agenda
- Digital monitoring and traceability systems
- Public–private investment in cold chain infrastructure

# Strategic Priorities (Policy Direction)



---

- Rehabilitation of existing landing beaches
- Standard landing site design nationwide
- Cold chain expansion
- Waste and sanitation systems
- Climate-resilient coastal infrastructure
- Co-management with fishing communities

# Development Partners in Ghana Fisheries

Theme	Development Partners	Key Roles
Governance & Policy	<ul style="list-style-type: none"> <li>• Food and Agriculture Organization (FAO) **</li> <li>• United States Agency for International Development (USAID)</li> <li>• European Union (EU)</li> <li>• Fisheries Committee for the West Central Gulf of Guinea (FCWC)</li> <li>• Fisheries Transparency Initiative (FITI)</li> <li>• Ghana Fisheries Recovery Activity (GFRA)</li> </ul>	Policy reform, co-management, stock recovery, IUU control, transparency, MCS
Infrastructure & Technology	<ul style="list-style-type: none"> <li>• China (Govt. of China)</li> <li>• Spain (Govt. of Spain)</li> <li>• DANIDA (Denmark)</li> <li>• KMI South Korea</li> </ul>	Fishing harbours, cold stores, post-harvest infrastructure, research & technical support
Livelihoods & Value Chain	<ul style="list-style-type: none"> <li>• Coastal Resources Center (CRC-URI)</li> <li>• Hen Mpoano</li> <li>• Friends of the Nation</li> <li>• SNV Netherlands Development Organisation</li> <li>• Central and Western Fishmongers Improvement Association (CEWEFIA)</li> <li>• CERATH Development Organization (CDO)</li> <li>• FAO</li> </ul>	Capacity building ,Community engagement, alternative livelihoods, women empowerment, value-chain development

# Conclusion



---

Ghana has made significant investments in modern landing infrastructure.

However, majority of artisanal landing sites remain basic.

Infrastructure modernization is essential for:

- Fisheries sustainability
- Food security
- Blue Economy growth.
- Investment + governance + maintenance = sustainable landing systems

**Thank you**

---

