



ATLAFCO participation workshop, our intended contribution would focus on three key areas:



**Strengthening Regional Cooperations**

**Evidence-Based Insights**

**Capacity Building and Inclusivity**

**Presented by: John Pekey Gayflor, Jr**  
**Associate Director- Human Resource for**  
**Manpower Development**

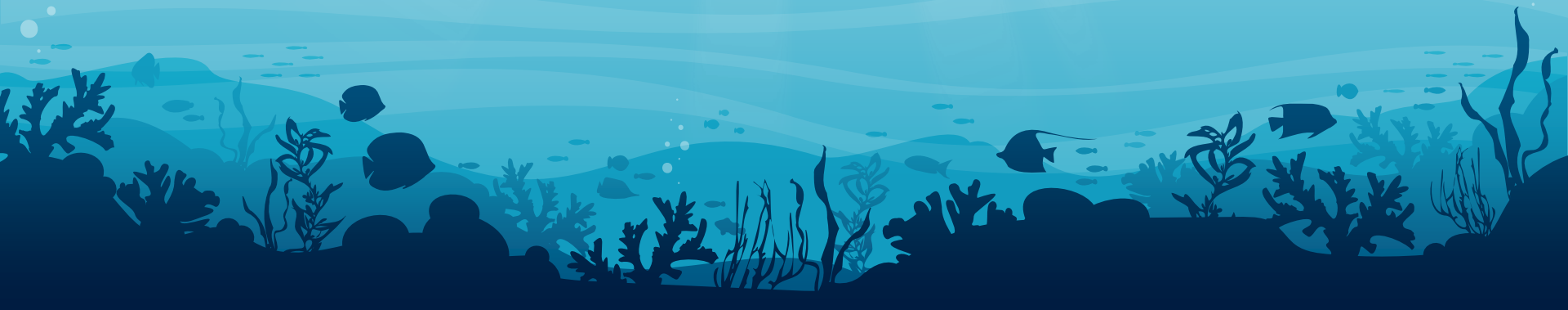
Tangier, Morocco  
April 12-15, 2026

# Presentation outline

**Strengthening Regional Cooperations**

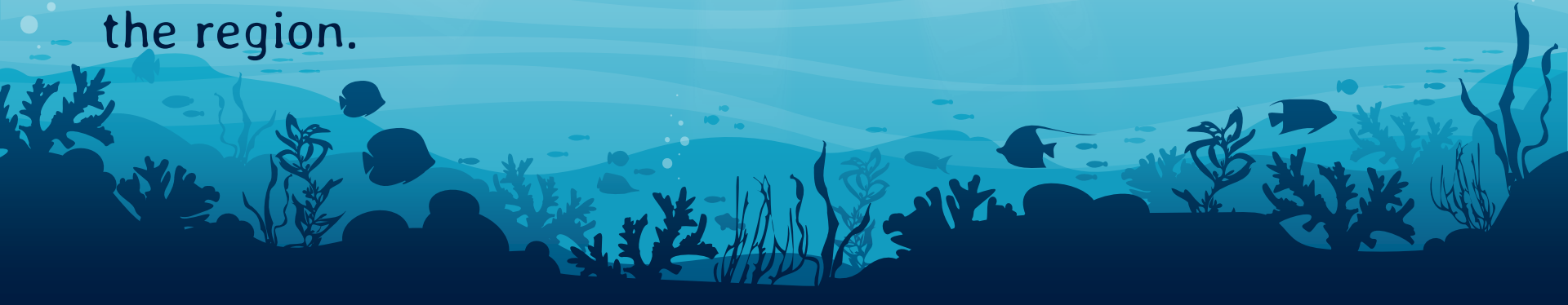
**Evidence-Based Insights**

**Capacity Building and Inclusivity**



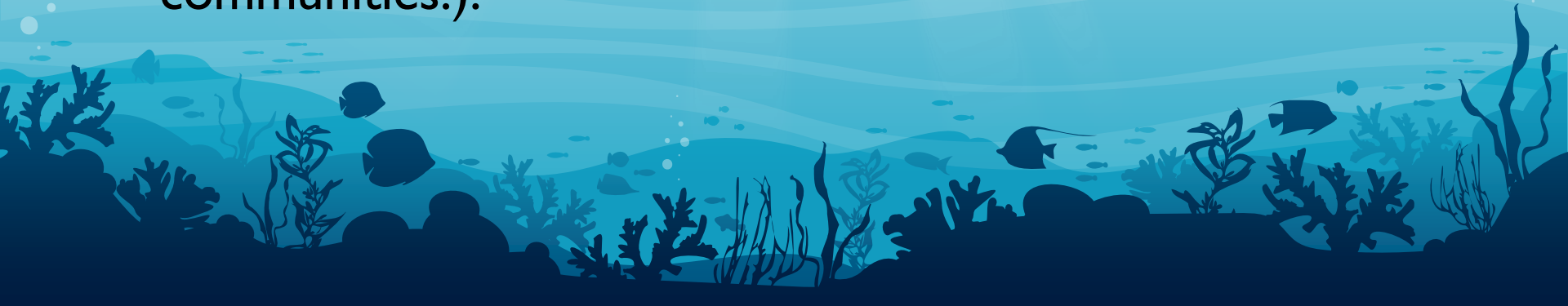
## Strengthening Regional Cooperation

- ☒ Our aim to highlight practical ways member states can deepen collaboration in fisheries governance, particularly in monitoring, control, and surveillance of shared waters.
- ☒ By encouraging knowledge exchange and joint enforcement strategies, that would contribute to reducing illegal, unreported, and unregulated (IUU) fishing across the region.



# Evidence-Based Insights

- Would bring forward synthesized data and research on sustainable fisheries management, including best practices from other regional organizations.
- Our contribution would emphasize how science-driven policies can balance economic growth with ecological sustainability, ensuring long-term benefits for coastal communities.).



# Capacity Building and Inclusivity

- ☒ Our intent is to advocate for stronger capacity-building initiatives, especially for smaller member states that may lack resources to fully implement ATLAFCO's frameworks.
- ☒ Additionally, we would stress the importance of inclusivity—ensuring that artisanal fishers, women, and youth are meaningfully engaged in decision-making processes.

## Conclusion

🏛️ In essence, our participation would be geared toward bridging knowledge gaps, fostering collaboration, and promoting sustainable practices that align with ATLAFCO's mission of responsible fisheries governance in the Atlantic region. and traders.

**THANKS YOU FOR LISTENING**

The background of the slide is a light blue gradient with a subtle sunburst pattern at the top. The bottom portion of the slide features a dark blue silhouette of an underwater reef scene, including various types of coral, seaweed, and several fish swimming in the water. Small white bubbles are scattered throughout the scene, particularly on the right side.